

Lightroom Mobile (IOS & Android) **AI Pitfalls: Protecting Your Competition Eligibility**



Introduction

The rapid advancement of AI-generative technology in photo post processing has fundamentally transformed the creative process. Adobe's integration of Firefly AI-generative technology into Lightroom exemplifies this shift, consisting of **seamless artificial intelligence that can generate or reconstruct image elements extending beyond the photographer's original capture.**

Adobe offers Content Credentials to document photo editing and AI use, though it's an **opt-in feature** rather than a default setting.

The setup process varies depending on whether you're using Lightroom's cloud subscription versions (2022-current) or the discontinued standalone version (6.0), with detailed instructions provided for both below.

Photography competitions are adapting to AI technology by establishing clearer submission criteria. Entrants should review these updated standards carefully before submitting work to prevent automatic rejection.

CAPA Competition Guidelines

CAPA has established clear eligibility criteria regarding AI-generative technology in competition submissions. Understanding these restrictions is essential for photographers who want to ensure their work remains eligible for CAPA competitions:

Images that have been created or modified using specific AI generative techniques are not permitted for submission into our competitions. This includes:

***In-painting** (where AI fills in generated elements not captured by the photographer or removes and replaces elements from a photograph with AI-generated content);*

***Out-painting** (where AI extends beyond the original boundaries of the photograph using generated elements); and*

***Image-to-image AI** (where AI transforms an entire photograph based on text prompts or style references)*

***Text-to-image** (where images are generated from scratch based on text entered into a prompt description)*

These restrictions apply whether or not text prompts are used in the AI generation process.

All parts of the submitted image are the creator's original work, containing no elements produced or captured by others

This document provides detailed guidance to help photographers navigate Lightroom's features safely while maintaining competition eligibility.

Safe vs. Flagged Tools

SAFE TOOLS (No Content Credentials added)

- Basic adjustments (e.g. exposure, highlights, shadows, blacks adjustment)
- Brush adjustments
- Chromatic aberration removal
- Enhance details
- Graduated filters
- Lens blur
- Noise reduction
- Post-crop vignetting
- Sharpening
- Generative Remove (**without** selecting **Use Generative AI**)

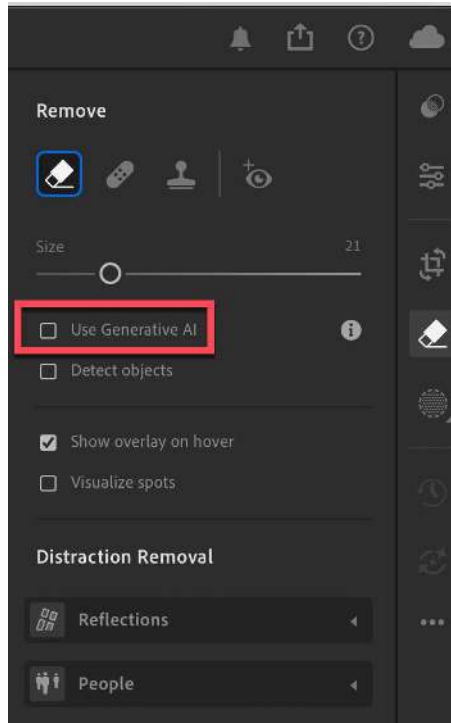


Figure 1 – Screen capture of the Remove window with not activating the Use Generative AI option.

✗ FLAGGED TOOLS (Content Credentials added)

- **Generative Remove (selecting Use Generative AI)**

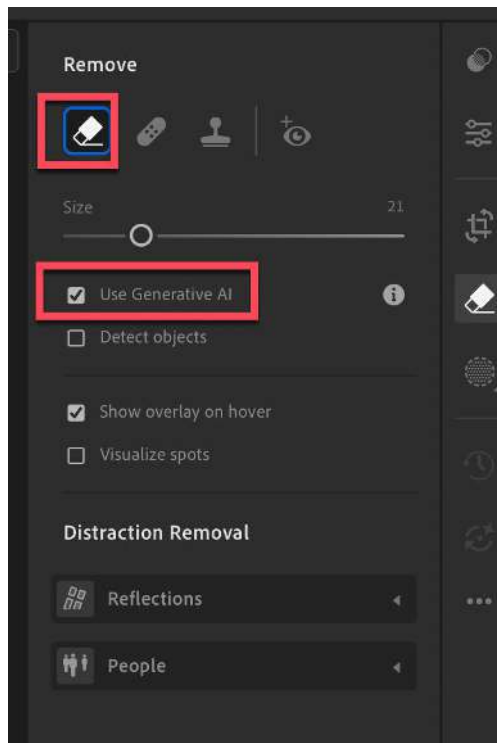


Figure 2 – Screen capture of the Remove window with the "Use Generative AI" feature selected.

- **Distraction Removal (selecting Use Generative AI)**

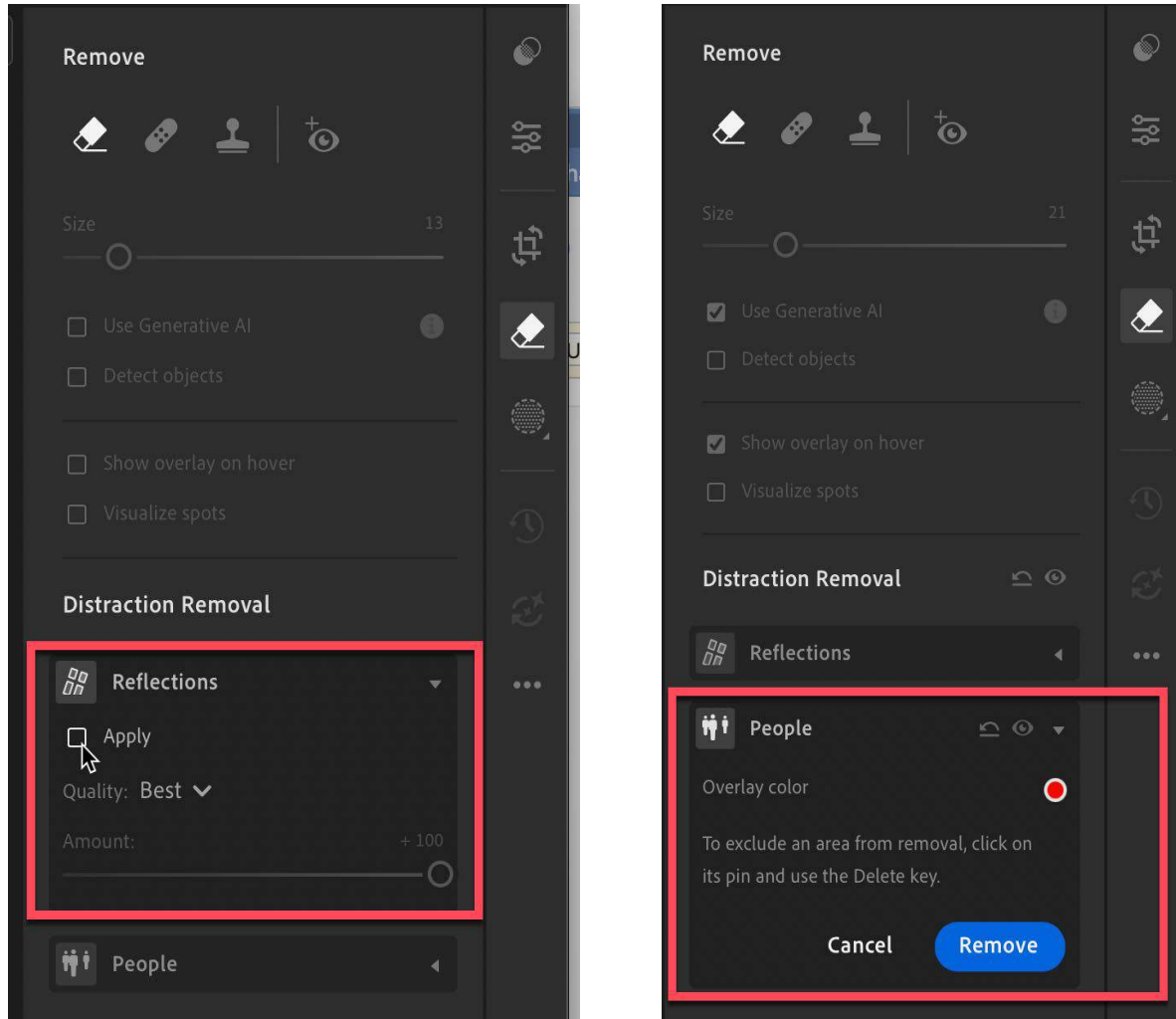


Figure 3 - Screen capture of the Distraction Remove – Reflection & People

Critical Mode Settings

REMOVE TOOL MODES

Mode	Result	Use When
“Use Generative AI” Not selected	✔ Adds content credentials	Want to remove details with no AI usage
“Use Generative AI” selected	✘ Always adds credentials & AI note	Want AI system to remove selected area

DISTRACTION REMOVAL MODES

Mode	Result	Use When
"Use Generative AI" selected with Distraction Reflection	✗ Always adds credentials & AI note	Want to remove distracting reflection
"Use Generative AI" NOT selected with Distraction Reflection	✗ Always adds credentials & AI note	Want to remove distracting reflection
"Use Generative AI" selected with Distraction People	✗ Always adds credentials & AI note	Want to remove distracting people
"Use Generative AI" NOT selected with Distraction People	✗ Always adds credentials & AI note	Want to remove distracting people

Content Credentials Benefits

Before diving into tool-specific guidance, it's important to understand why Content Credentials are valuable for photographers:

Enhanced Attribution and Recognition

- Content Credentials embed secure metadata explaining who created the image and how it was edited
- This metadata acts as a digital fingerprint, giving photographers credit as their work is shared online

Protection Against Image Theft

- Since credentials remain attached to images, tracing and verifying original creators becomes easier
- Content Credentials serve as proof of content provenance, offering defense against image theft and unauthorized commercial use

Privacy Protection

- Content Credentials focus on verified creator identity and general editing overview without exposing sensitive personal metadata like exact camera settings, timestamps, or GPS coordinates
- Helps photographers maintain privacy around personal shooting information while still benefiting from protected attribution

Competition Verification Benefits

- Provides competition coordinators with an objective technical method to verify AI involvement by using the C2PA's Content Credential webpage (<https://contentcredentials.org/verify>)

- Enables transparent detection of AI generative techniques like in-painting or out-painting
- Helps maintain fair play and trust in judging outcomes

Content Credentials Setup

Content Credentials are digital signature that provide transparency about how images were created and edited. When enabled, they record editing actions, creator information, and can help verify image authenticity.

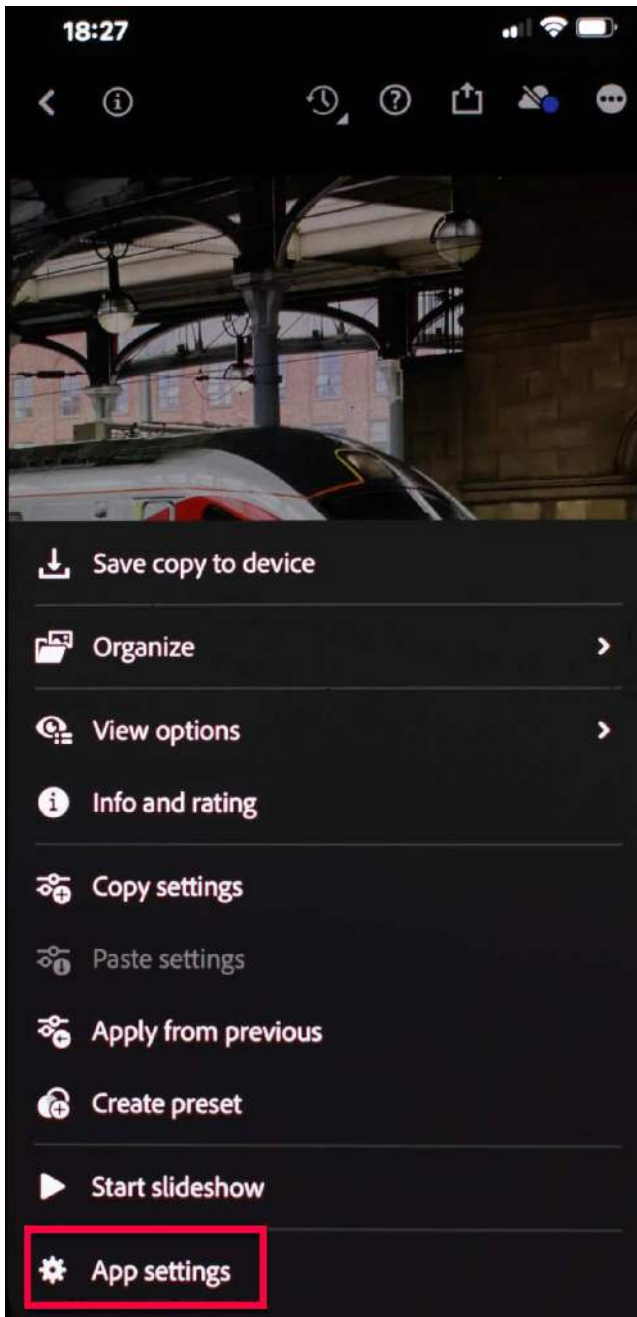
For **all** Lightroom Classic subscription-based applications, the following steps will be **required** for submission into our photo competitions.

To activate Content Credentials, Lightroom Mobile needs to be configured. This configuration only needs to be once. These settings will apply to all future exports until they are changed.



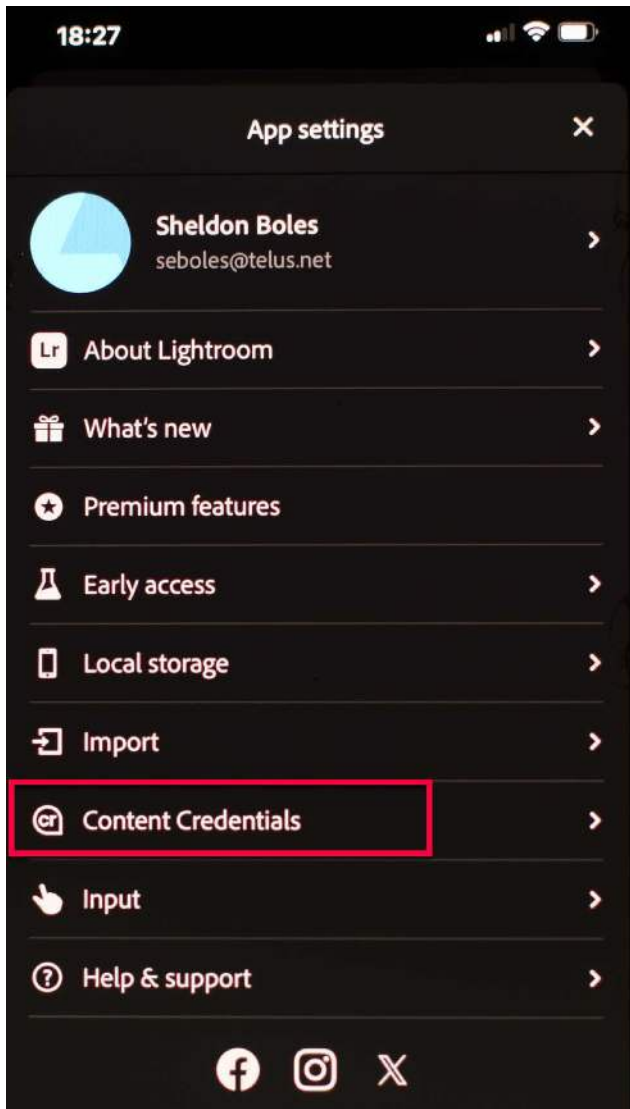
Step 1: Tap on the **toggle feature** in the upper right hand corner as shown in figure 4 to the left

Figure 4 – Screen capture of the Lightroom Mobile toggle option highlighted in red.



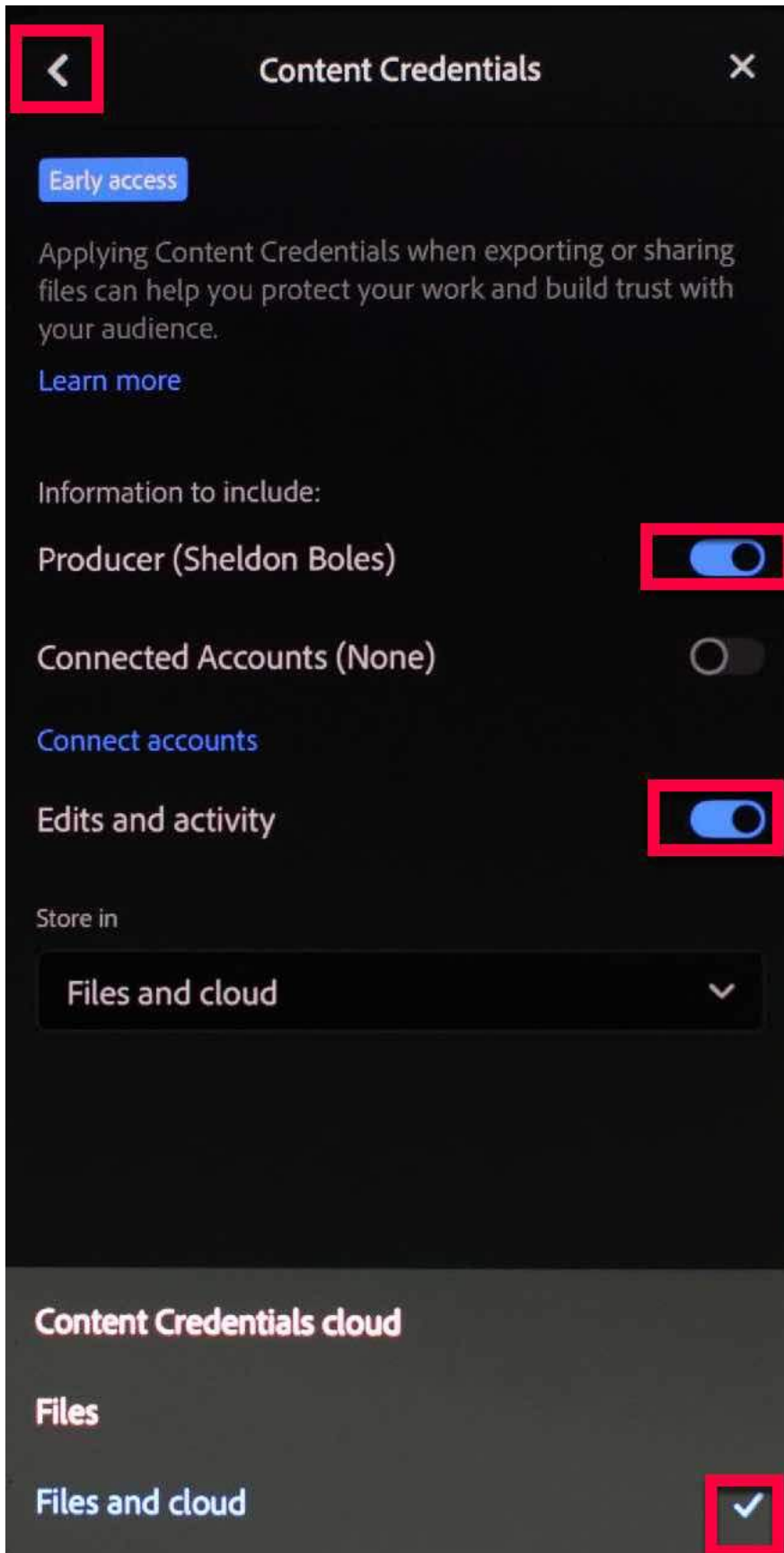
Step 2: Select the **App setting** option as highlighted in figure 5

Figure 5 – Screen capture of the Lightroom Mobile menu selection, with the App settings option highlighted in red.



Step 3: Select the Content Credentials option, as shown in figure 6

Figure 6 – Screen capture the Apps setting window in Lightroom Mobile, with Content Credentials highlighted in red.



Step 4: Selection option for both the **Producer** (name listed on your Adobe account)

Step 5: Select **Connected Account** option (if you have Behance, Instagram, or any other social media account by selecting [Connect accounts](#))

Step 6: Select **Edits and activity** option (The editing and processing actions taken to produce the final image. – **This feature must be turned on**)

Step 7: Select the **Files and cloud** option (indicates where the Content Credentials will be retained)

Explanation of each of the three options are listed below.

Figure 7 – Screen capture of the Lightroom Mobile's Content Credentials window.

Files and Cloud details: Producer: The name listed on your Adobe account.

- **Publish to Content Credentials cloud** – when selected, the Content Credentials are published to Adobe’s public Content Credentials cloud, which is separate from your Adobe plan’s cloud file storage. This makes the credentials persistent and searchable publicly. Under this option, the image’s Content Credentials data (not necessarily the whole image) is uploaded to contentcredential.org/verify or an equivalent Adobe verification site; **OR**
- **Attached to Files** - the Content Credentials metadata is embedded only inside the exported file, and the image is NOT uploaded to the Content Credentials cloud. This keeps the file more private but increases file size, and no public record in the cloud is created. Using this option, the image will be identified as containing Content Credentials, including generative AI usage if present; **OR**
- **Attach and publish to cloud** - This option does both: embeds the credentials inside the file and publishes them to the cloud.

Step 9: Select the **<** (back arrow) situated in the upper left hand corner of the Content Credentials window shown in figure 7 above.

Step 10: Select the **X** (in the upper right hand corner) of the **App settings** window and the Lightroom editing main window will be presented

Activating Content Credentials - When Required

With Lightroom Mobile being configured with Content Credentials settings, they can be included when images are saved after editing.

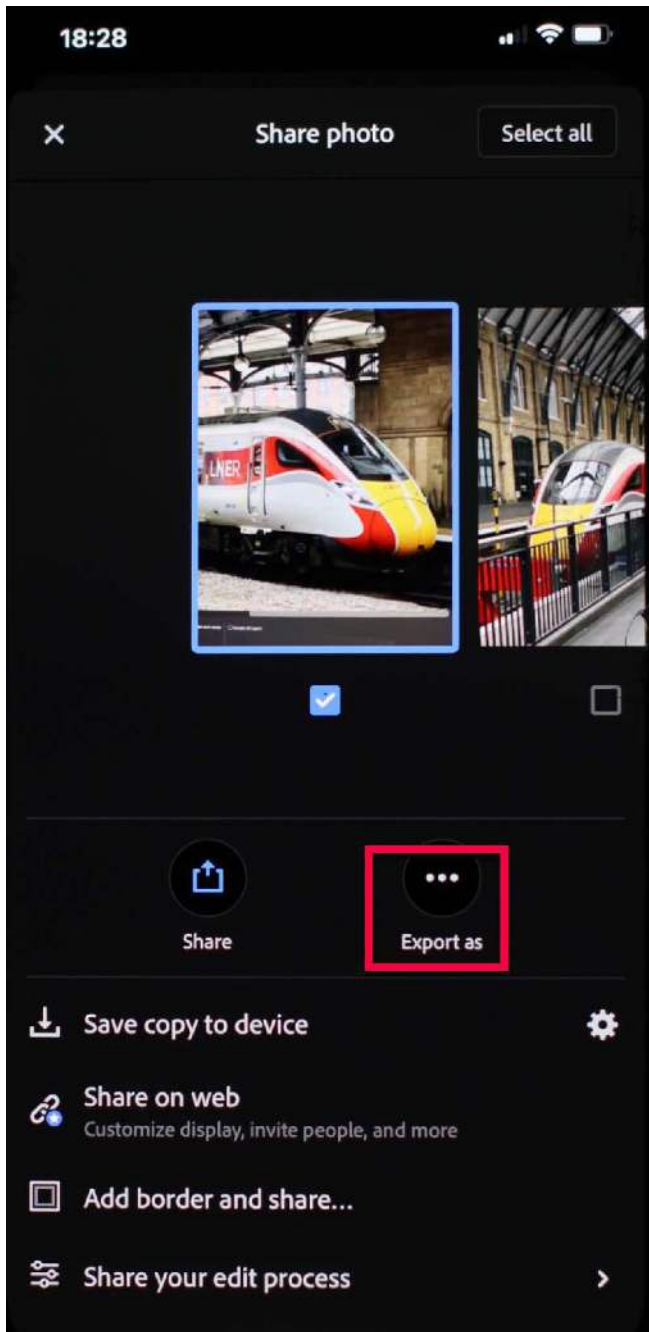
Here's how to activate this feature for individual photos.

Special Note - These steps are must be performed each time an image is saved with Content Credentials.



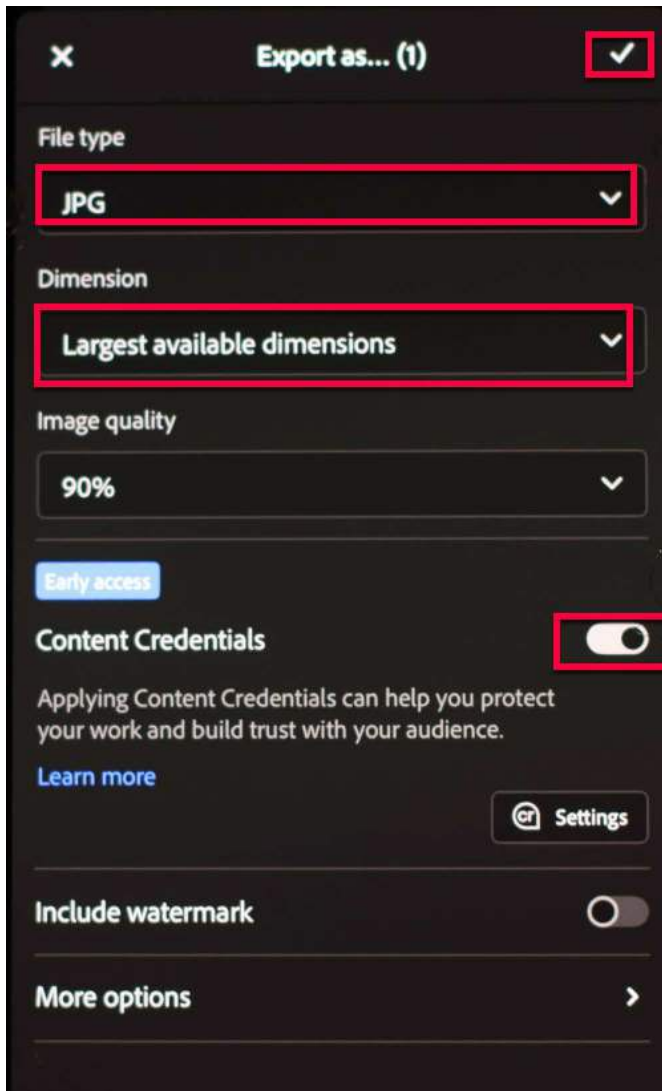
Step 11: Select the **Share** option (located at the top of this window of the main Lightroom window as shown in figure 8 below

Figure 8 – Screen capture of the Lightroom Mobile's Share option, highlighted in red.



Step 12: Select the **Export as** option

Figure 9 – Screen capture of the Lightroom Mobile's Share window, with the Export as option highlighted in red



Step 13: Select **JPG** file type option

Step 14: Set image dimensions to comply with CAPA competition requirements.

Step 15: Select **Content Credentials** option

DO NOT ACTIVATE THE WATERMARK FOR OUR COMPETITIONS

Figure 10 - Screen capture of Lightroom Mobile's Export as window.

Step 16: Select **check mark** (located in the upper right hand corner of the Export as window above) then the file will be exported and you will be turned to the main Lightroom editing window.

Best Practices Workflow

Before Editing (photo competition compliant)

- **Preserve your original files** and work on copies when editing. For JPEG files, always duplicate the original before making any edits to maintain an untouched backup. For RAW files, this isn't necessary since RAW editors work non-destructively. Your edits are stored as instructions separate from the original file, and changes are only applied when you export the final image. The original RAW file always remains unmodified.
- **Use traditional tools:** Stick to Spot Healing, Healing Brush, Clone Stamp, Content-Aware Fill

analysis to meet our competition standards. **Images failing to contain the CR symbol must be exported as outlined in this document.**

Images identified as containing generative AI elements will require the maker to either:

- Re-edit the image without activating any generative features, or
- Decide not to enter the image into competition

Image Requirements for Competition Winners

CAPA **may** request the following image files from the potential winners:

- Original unedited JPEG or RAW file
- All source images used in composites or blends
- Working file (PSD) showing your editing process
- XMP metadata file (when applicable)

Special Note - Keep these files accessible throughout the competition period.

Verification & Authentication Processes: All requested files will be subjected to our analysis to ensure the authenticity of the submitted image and verify compliance with competition guidelines.

Important: Images that cannot provide the required verification files or fail our authenticity analysis will be disqualified and competition results will be adjusted accordingly.

Closing Comments

By implementing Adobe Content Credentials, photographers can protect their creative work, strengthen their reputations, and establish trust in an era of digital manipulation and AI-generated imagery.

If you have any questions or concerns relating to the above details, you can email the writer at competitions@capacanada.ca

Sheldon Boles – FCAPA
CAPA Director of Competitions